

iRecord – become a citizen
scientist!



Starter – how many of these plants and animals can you name?

A circular inset image showing a cluster of pink cherry blossoms with green leaves.

Cherry

A circular inset image of a blackbird perched on a branch, facing right.

Blackbird

A circular inset image of a blue tit perched on a branch, facing right.

Blue tit

A circular inset image of a bumblebee on a flower.

Bumblebee

A large circular inset image showing a field of purple bluebells.

Bluebell

Starter – how many of these plants and animals can you name?

A circular inset image of a bright green brimstone butterfly on a leaf.

Brimstone butterfly

What is iRecord?

- A **Citizen Science** project.
- People across the country use the app to **record plants and animals** they have seen
- The results help scientists to look for **trends**. For example, they might find that one area of the country has less bumblebees. They can then try and find out what has **caused the results**.



Be part of a real Science project!!!

1. Download the app.
2. On your next walk outside, or even from your window, look for plants and animals.
3. Take a photo so you can identify it later.
4. Record your results on the app.
5. Not sure what to look for or not confident identifying plants or animals? Check the next few slides for tips!
6. Good things to look for now are butterflies, spring flowering plants and birds





Blackbird



Coal tit



Goldfinch



Jackdaw



Song thrush



Blue tit



Collared dove



Great tit



Long-tailed tit



Starling



Carrion crow



Dunnock



Greenfinch



Magpie



Wood pigeon



Chaffinch



Feral pigeon



House sparrow



Robin



Wren

British Butterflies: Identification



Brimstone



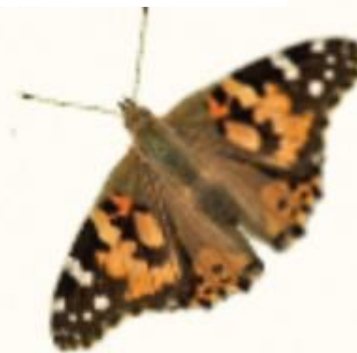
Comma



Holly Blue



Orange-tip



Painted Lady



Peacock



Red Admiral



Small Copper



Small
Tortoiseshell



Speckled Wood

Spring's wild flowers

Head out with **WaitroseGarden** magazine's guide to country lanes, river banks, woodland and meadows and see how many of these flowers you can spot



COW PARSLEY
Anthriscus sylvestris

Look out for a froth of lacy flowers on roadside verges, hedgerows and woodland in May and June.



LILY OF THE VALLEY
Convallaria majalis

These scented May bells love alkaline soil, so are often found in woodland or the cracks of limestone paving.



WOOD ANEMONE
Anemone nemorosa

Keep your eyes peeled for these pretty white flowers in early spring, before the woodland canopy becomes too dense.



GREATER STITCHWORT
Stellaria holostea

Dainty flowers that thrive in hedgerows and grassy banks - listen for the popping of their ripe seedheads in late spring.



CUCKOO FLOWER
Cardamine pratensis

Delicate in colour and form, this native of damp riverbanks, ditches and meadows heralds the start of spring in April.



THRIFT
Armeria maritima

On seaside cliffs, beaches and dunes from April to July, their lilac-pink pincushion flowers are unmistakable.



WILD GARLIC
Allium ursinum

You can smell these star-shaped flowers before you see them, their pungent scent carrying on a warm April breeze.



PRIMROSE
Primula vulgaris

This pale-yellow beauty is among the first flowers to appear in grassland, clearings and hedgerows - as early as December.



COWSLIP
Primula veris

You'll find cowslips in meadows, woodlands and hedgerows in April, if you're lucky - they're increasingly rare.



RED CLOVER
Trifolium pratense

Found on sunny, grassy banks and meadows from late spring to autumn, and popular with bees for its nectar.



RED CAMPION
Silene dioica

A stalwart from May to September, these rose-pink flowers are a fabulous sight on roadsides, and in hedges and woodlands.



SNAKE'S-HEAD FRITILLARY
Fritillaria meleagris

Once common in spring on damp riverbanks and meadows, these graceful chequered flowers are now a rarity.



COLT'S-FOOT
Tussilago farfara

A bright ray of spring, colt's-foot flowers early, usually on disturbed ground, steep slopes and woodland edges.



MARSH MARIGOLD
Caltha palustris

Glossy scalloped leaves and yellow star-like flowers make this a cheery sight in marshes, ditches and damp meadows.



LESSER CELANDINE
Ranunculus ficaria

From February to May, these cheerful yellow flowers brighten up damp woodland and hedgerows.



LUNGWORT
Pulmonaria officinalis

A pretty shade lover with speckled leaves that brightens up hedgerows and woodlands from February to May.



BLUEBELL
Hyacinthoides non-scripta

The native bluebell can cover woodland floors with intense blue in April or May, before the canopy casts too much shade.



BUGLE
Ajuga reptans

The purple-blue flower spikes pop up from a carpet of glossy leaves from April to July, usually in damp grassland.

Where to look?

- Clayfield Copse, Balmore Park, Kings Meadows, Buggs Bottom, along the River Thames, Prospect Park

Go further.

If you enjoy identifying wildlife, research what different jobs ecologists do. They often identify plants and animals

See if the plants and animals you see change throughout the next few weeks. Can you identify any patterns?

Research your favourite plant and animal and find out some interesting facts about them!

